

Wildflowers

THE BULLETIN OF THE BOTANICAL SOCIETY OF W. PA.



*Ilex
opaca*

RFB

WILD PARTY

We have this wild party every year...and we haven't been raided yet.

It's our annual Christmas party, where we enjoy all sorts of things from the wild — fruits, berries, nuts, mushrooms — in pies, cookies, candies, jellies, beverages, etc. Each member brings something for all to share.

We start off singing Christmas carols with Virginia Phelps leading us. We especially like those songs with some reference to nature, like "Deck the Halls", "O Christmas Tree", "The Holly and the Ivy", "Lo, How a Rose E'er Blooming", and "Hi Ho the Holly". Maybe we might find some one to sing some of these lesser known carols —

"Bright, Bright the Holly Berries"
"Winds through the Olive Trees"
"The Cherry Tree Carol"
"Holy Day Holly Carol"

We have re-printed this last one in the Bulletin. Perhaps you have some additional carols involving plants and would be willing to teach us.

We'll have this party at our December meeting, Monday, December 8, 8:00 P.M., at Mellon Bank Auditorium, 5th and Craig, Oakland.

NOMINATING COMMITTEE

We elect officers at the December meeting. Our nominating committee, consisting of

Chris Metelmann
Max Armbruster
Jasper Brown

will present a slate. Other nominations may be made from the floor.

WILDFLOWER CALENDAR

Botanical Society members who are also members of the Western Pennsylvania Conservancy...and most of us are...have already received the 1981 Wildflower Calendar, illustrated with watercolors by Andrey Avinoff, a Russian emigre. The original watercolors appeared in the two-volume Wildflowers of Western Pennsylvania and the Upper Ohio Basin, with text by Dr. Otto Jennings.

Anybody can obtain a copy of this calendar by sending \$3 to Western Pennsylvania Conservancy, 316 Fourth Ave., Pittsburgh, Pa., 15222. Stop in and the price is \$2.50.

MEMBERSHIP FORM

This form has a threefold purpose:

1. It is your invoice for 1981 dues — \$5 for individuals, \$8 for family membership. Our two big expenses are postage and the taxes on Titus Bog.
2. We are making up a new membership directory. Please print your name exactly as you want it to appear in the directory and on the mailing list.
3. We hope to set up a telephone chain, so we'll be able to notify you in case an emergency necessitates a change in our schedule.

Send this form, along with your check, to our treasurer, Howard McIlvried, 8723 Highland Road, Pittsburgh, Pa., 15237. Even better, save postage by bringing it with you to the December meeting.

DECEMBER, 1980

Robert F. Bahl, Sec.
401 Clearview Ave.
Pittsburgh, Pa., 15205
(412) 921-1797

HOLY DAY HOLLY CAROL

Cornish

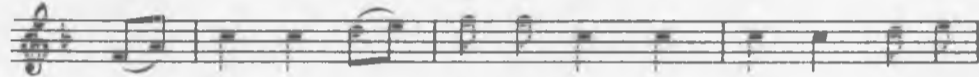


1. Now the hol - ly bears a ber - ry as white as the
2. Now the hol - ly bears a ber - ry as green as the

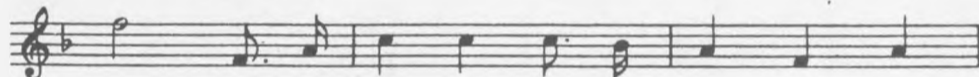


milk, And Ma - ry bore Je - sus, who was wrapped up in silk.
grass, And Ma - ry bore Je - sus, who died on the cross:

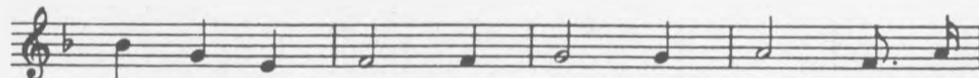
REFRAIN



And Ma - ry bore Je - sus Christ our Sav - iour for to



be, And the first tree in the green - wood, it



was the hol - ly, hol - ly, hol - ly! And the



first tree in the green - wood, it was the hol - ly.

3. Now the holly bears a berry as black as the coal,
And Mary bore Jesus, who died for us all:
Refrain

4. Now the holly bears a berry, as blood is it red,
Then trust we our Saviour, who rose from the dead:
Refrain