

Wildflowers

THE BULLETIN OF THE
BOTANICAL SOCIETY OF W. PA.

January 1990

JANUARY MEETING

Our first meeting of the new year will be Monday, January 8, at 8 P.M. - at Trinity Hall, Carlow College, 3333 Fifth Ave., Oakland.

Dr. Paul Wiegman, Director of Natural Area Wetlands for the Western Pennsylvania Conservancy, will present a program, "Wetlands in W. Pa.; an Overview".

* * *

NATIVE PLANT SOCIETY

The January 20 meeting of the Pennsylvania Native Plant Society Rare Plant Committee will be held at the Howard Johnson Motor Lodge on Eisenhower Blvd. in Harrisburg. If you plan to stay there, make your own reservation at Howard Johnson, but specify that you are with the Conservancy.

* * *

DINOSAURS BROUGHT ABOUT FLOWERING PLANTS!

This is only a theory!

According to Robert T. Bakker, author of "The Dinosaur Heresies", we have the dinosaurs to thank for the creation of flowers.



His scenario is this. About 135 million years ago, most of the long-necked dinosaurs that munched leaves from the tops of trees died out. Replacing them were two- and three-ton giants whose curved backbones allowed them to bring their snouts close to the ground for grazing.

These creatures threatened meadows with overgrazing. The seedlings of evergreens, ferns, and horsetails were particularly at risk because they could not quickly regenerate or reseed themselves. To fill the void, nature responded with the first flowering plants. They rapidly gained footholds, Bakker says, by spreading their "seeds onto an overgrazed patch of bare soil to produce a clump of shrubs quickly," before the dinosaurs returned "and again mowed everything to the ground".

This is only a theory!

We have a renowned paleobotanist in our Botanical Society, Dr. Anthony J. Miklaussen. I wonder what he thinks.

* * *

10 YEARS OF "WILDFLOWERS"

That's right. The very first issue of "Wildflowers" came out in January, 1980, ten years ago. In that first issue, we extended this invitation:

"Botanical Society members may avail themselves of this monthly bulletin for anything they wish to share with the rest of us. Within space limitations after taking care of our news announcements, the page is available for your contributions. These may be either prose or poetry. They may cover trips you have taken, discoveries you have made, technical material, the joy of nature, or what have you. The only restriction is that they be pertinent botanically."

That invitation still stands.

* * *

WILDFLOWER SEED CATALOG

I have just received a new catalog from the Vermont Wildflower Farm.

If you would like a copy, here's the address:

The Vermont Wildflower Farm
P. O. Box 5, Route 7
Charlotte, VT 05445-0005

The 6-acre Vermont Wildflower Farm with test fields, gift shop, seed shop, and a multi-media theater on wildflowers (July 1 through closing) is open every day from 10 to 5 from early May until mid-October.

This place is reputed to be well worth a visit. I have not been there, and would like to hear from somebody who has been.

Robert F. Bahl, Sec.
401 Clearview Ave.
Pittsburgh, Pa., 15205
(412) 921-1797

Isotria verticillata
Whorled Pogonia

ISOTRIA VERTICILLATA

The sketch of the Whorled Pogonia was made by our member, Phyllis Monk.

Our supply of sketches is running low. We have used 121 of these to date, contributed by several dozen members. We know, though, that there are others who have the ability, if they would just get a "round tuit".

* * *

BOTANICAL SOCIETY OFFICERS FOR 1990

At our December meeting, all of our officers were re-elected:

President - Dr. Mary Joy Haywood
Vice-President - Mary Lou Brown
Recording Secretary - Virginia A. Phelps
Corresponding Secretary - Robert F. Bahl
Treasurer - Walter J. Gardill
Field Trip Chairman - Scott J. Shriver

I wasn't there, but I have a suspicion that the election was rigged.

* * *

1990 DUES ARE DUE

No dues statements are mailed out, so if you haven't paid your 1990 dues yet, send your check now to:

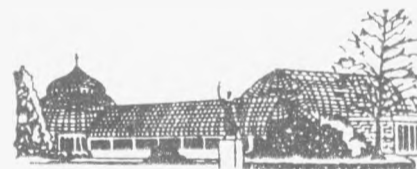
Walter J. Gardill, Treasurer
P. O. Box 226 Grosick Rd.
Ingomar, PA 15127

Membership: Single - \$5, Family - \$8, Student - \$2.50.

* * *

"PLANTS OF THE BIBLE" AT PHIPPS

Phipps Conservatory's 1990 "Plants of the Bible" tour begins January 27, 1990. This tour takes you into the natural world of the Mediterranean in biblical times.



After an introduction, which sets the stage for the trip back in time, guests see and learn about many of the plants which were important in the lives of these ancient peoples...

This event takes place on three week-ends and two week-days:

| Saturday | Sunday | Wednesday |
|-------------|-------------|-------------|
| January 27 | January 28 | January 31 |
| February 3 | February 4 | February 7* |
| February 10 | February 11 | |

The times on Saturdays and Sundays are 1:30, 2:30 and 3:30. On Wednesdays they are 11:00, 12:00 and 1:00.

Each tour lasts approximately one hour. The cost of admission is \$3.00 for adults and \$2.50 for children and senior citizens. Reservations must be made in advance. The touring groups are small, and space is limited. For information or reservations, please call Phipps Friends office at 622-6958.

In the past seven years, more than 5100 visitors have seen Phipps Conservatory's "Plants of the Bible" tour. If you have not been among them, you have missed an unusual opportunity to "be there" in a period of history that is important. I hope that you will be a Bible tourist this year. You will enjoy the trip.

- Anne Bahl

* Sorry! This date is completely booked.