



# Botanical Society of Western Pennsylvania

## *Specimens Requested*

*for PENNSYLVANIA MOSSES by John Atwood*

The author, with the help of a 2008 Wild Resources Conservation Grant from the Pennsylvania Department of Conservation and Natural Resources, is compiling a specimen-based checklist of Pennsylvania mosses. Additional Pennsylvania specimens are being sought for the purpose of documenting the distribution of these plants at the county level. Since individual counties throughout the Commonwealth vary greatly in their numbers of reported moss taxa, newly collected specimens may add county records.

Members of the Society are being asked to collect mosses for the Pennsylvania moss checklist. Mosses can be collected at all times of the year. Specimens should be placed into paper bags, not plastic, as plastic bags will cause the mosses to mold. Including some of the substratum is sometimes useful in determining the species; however

only a little bit should be collected and care should be taken to exclude excess debris. When possible, specimens should be collected with sporophytes. Mosses do not require pressing. Opening the paper bags will help to dry the plants by exposing them to air.

Specimens should be thoroughly dried and labeled. Each label should include the following information: (1) the Pennsylvania county and any additional locality and habitat data; (2) the substratum; (3) the collector(s) and the collection number(s); and (4) the date that the collection was made. Specimens should be mailed to John Atwood, Bryophyte Herbarium, Missouri Botanical Garden, P.O. Box 299, St. Louis Missouri, 63166-0299. Receipt of the specimens will be acknowledged. A list of the names of the mosses will be returned after the plants have been determined. Thank you for your assistance in helping to document the diverse Pennsylvania bryoflora.

## MARCH 10 MEETING

The next meeting will be Monday, March 10, 7:15 p.m., at Kresge Theater, Carlow University, 3333 Fifth Avenue, Pittsburgh, PA (Oakland). Kresge Theater is on the top floor of the Grace Library and is accessed from the upper campus. Place a note on your dashboard saying "Botanical Society Meeting," or use your parking permit.

Former National Park Ranger and naturalist Tim Manka will talk about the

tenacity and adaptability of plants in the Caribbean. A veteran of 42 cruises, 35 of them to the Caribbean, Tim will discuss the needs of the plants in the West Indies and how they adapted to their local environment. Be prepared to enjoy an energetic hour of the best botanical natural history stories.

Blue-eyed Mary (*Collinsia verna*) illustration courtesy of: USDA-NRCS PLANTS Database / Britton, N.L., and A. Brown. 1913. An illustrated flora of the northern United States, Canada and the British Possessions. Vol. 3: 188.

wildflowers

MARCH 2008

# EVENTS



## **Wildflowers,**

Bulletin of the Botanical Society of Western Pennsylvania, is published bimonthly by the Botanical Society of Western Pennsylvania. We welcome short articles of botanical interest, drawings, and notices of botanical events and group activities. Send to the editor at the address below. Deadline for submissions is the 16th of the previous month.

**Wildflowers** is printed on recycled paper.

*Editor:* Karen Sandorf; 412-885-8237  
Post Office Box 97994, Pittsburgh PA 15227  
bswpnews4k@comcast.net

*President:* Bonnie Isaac; 412-622-3253  
E-mail: isaacb@CarnegieMuseums.org

*Vice-President:* Phyllis Monk, 412-831-2724  
E-mail: uscmonk1@verizon.net

*Treasurer:* Kimberly Metheny

*Recording Secretary:* Barbara Schomer

*Program Chairpersons:* Anne & Dave Koenig

*Field Trip Chairperson:* Loree Speedy  
724-872-5232; E-mail: mousemapper@verizon.net

The Society meets the second Monday of each month, September through June, at 7:15 p.m. sharp, at Kresge Theater, Carlow University, 3333 Fifth Avenue, Oakland. All are welcome to the informative program and business meeting.

## MEMBERSHIP INFORMATION

Annual dues are \$10.00 for individual and \$15.00 for family. Students can join at half-rate. To join, mail your name, your address, and check payable to "Botanical Soc. of W PA" to Loree Speedy, 279 Orr Road, West Newton, PA 15089. Your membership includes a subscription to the bimonthly bulletin **Wildflowers**.



The Botanical Society was founded in 1886.

The object of the Society shall be to bring together those who are interested in Botany and to encourage the study of this science and a knowledge of plants.

## **EDWARD DONOVAN** *Naturalist Artist, Author And Collector*

The Hunt Institute will exhibit selections from its large collection of botanical watercolors by the early 19th-century British naturalist Edward Donovan 27 March to 29 June 2008. Created in the period 1823–1830, they depict exotic plants introduced to the British Isles. Along with these watercolors, a selection of Donovan's books lent by the Carnegie Museum of Natural History Library will be on display.

Edward Donovan (1768–1837) wrote and illustrated books about the insects, shells, fishes and quadrupeds of England and the insects of China, India and New Holland between 1789 and 1827.

The exhibition will be on display on the fifth floor of the Hunt Library building at Carnegie Mellon University. Hours: Monday–Friday, 9 a.m.–noon and 1–5 p.m.; Sunday, 1–4 p.m. (except 18 and 25–26 May). The exhibition is open to the public free of charge.

In conjunction with *Edward Donovan: Naturalist Artist, Author and Collector*, the Hunt Institute will hold its annual Open House on 22–23 June 2008. A schedule of events will be available soon at <http://huntbot.andrew.cmu.edu>.

For further information, contact the Hunt Institute at 412-268-2434. Directions and a campus map may be found at <http://www.cmu.edu/about/visit/directions-parking.shtml>

*"Ipomea [sic] variabilis," watercolor by Edward Donovan, 1826. © 2008 Hunt Inst*

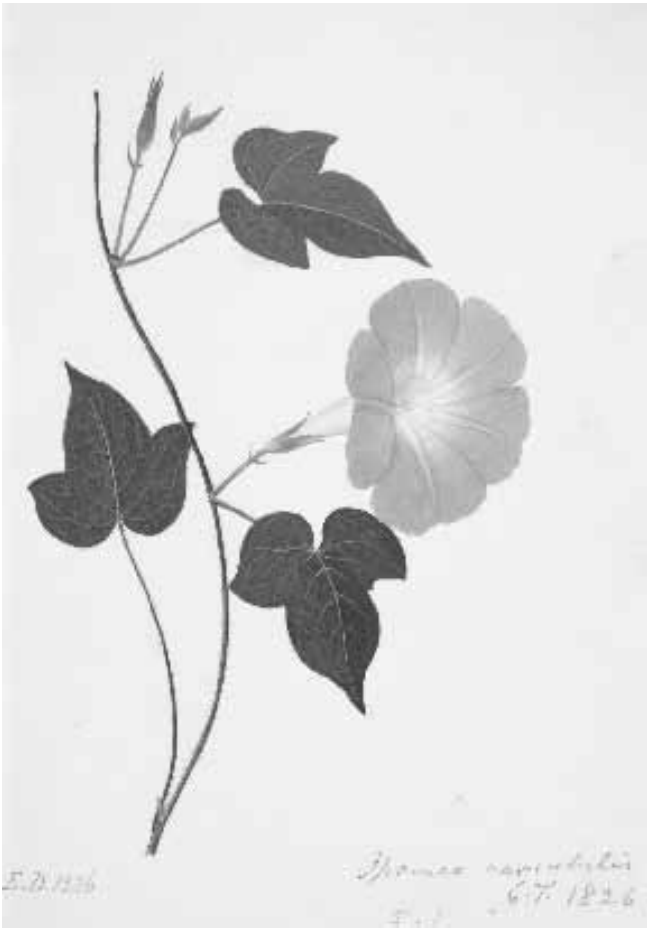
## CELEBRATE TRILLIUMS!

Mt. Cuba Center and its sponsoring partners invite you to the Trillium Symposium, a unique two-day conference in the beautiful Brandywine Valley in northern Delaware.

Special guest speakers like Mr. Frederick Case, Mr. Tony Avent, and Mr. C. Cole Burrell will be presenting on topics of interest to all trillium enthusiasts. There is also an optional third day field trip to the beautiful Shenk's Ferry Wildflower Preserve in southern Pennsylvania where you can interact with wildflower experts and explore the season's greatest treasures.

The Trillium Symposium will be held at Winterthur Museum and Country Estate on Thursday and Friday April 17–18, 2008 with an optional field trip on Saturday. Learn more about the schedule of events and get complete session descriptions at [www.trilliumsposium2008.org](http://www.trilliumsposium2008.org). Space is limited.

# of Interest



Institute for Botanical Documentation. All Rights Reserved

## WILDFLOWER PILGRIMAGE

The Forty-Seventh Annual West Virginia Wildflower Pilgrimage will be held at Blackwater Falls State Park May 8–11. Dozens of tours highlighting the area's native flora occur. Specialists from universities and resource agencies will be on hand to point out interesting flora. Speakers, exhibits, and a Saturday banquet are featured in the evenings. For information, call Emily Fleming or Vickie Hash at 304-558-2754 or write WV Department of Natural Resources, State Capitol Complex, Building 3, Room 669, Charleston, WV 25305.

## REGIONAL CONSERVATION EVENT *at the Zoo*

“Conservation Connection at the Zoo”, a region-wide celebration of conservation, will be held at the Pittsburgh Zoo and PPG Aquarium on the evening of Saturday, May 3rd. Tickets must be purchased in advance, and will become available for purchase online on March 15th, at [www.westmorelandconservancy.org](http://www.westmorelandconservancy.org). Reduced-price tickets for May 3rd daytime general admission to the Zoo will also be available.

The focus of the evening will be meeting and sharing ideas with other conservation-minded people and organizations, while enjoying a delicious dinner, planned diversions, and fun. Go to [www.westmorelandconservancy.org](http://www.westmorelandconservancy.org) for more information.

---

## PENNSYLVANIA RARE PLANT FORUM

The Pennsylvania Rare Plant Forum will be held Saturday, 12 April 2008, at the new offices of the Western Pennsylvania Conservancy, 800 Waterfront Drive (Herr's Island), Pittsburgh, PA.

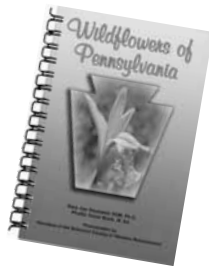
All people interested in the conservation of Pennsylvania's native flora are encouraged to attend. In addition to discussing proposed changes to the list of Plants Of Special Concern In Pennsylvania (POSCIP), presentations are also scheduled.

Eric Burkhardt, Penn State, has completed his PhD research on *t*, and will present his findings. Chris Firestone, DCNR Native Plant Program, will attempt to sort out the sometimes confusing interrelationships between different programs and institutions involved in the conservation of the native flora of Pennsylvania.

If you would like to give a presentation on recent work you have done related to the conservation of the flora of our region, contact Steve Grund. For detailed information about the Forum and suggested overnight accommodations, contact Steve at the Western Pennsylvania Conservancy at 412-586-2350 or by e-mail: [sgrund@paconserve.org](mailto:sgrund@paconserve.org).

BSWP President Bonnie Isaac will co-host a herbarium tour at the Carnegie Museum of Natural History at 4:00 on Friday, April 11 if there is sufficient interest (email Steve at [sgrund@paconserve.org](mailto:sgrund@paconserve.org)). If you would like to come earlier to work with specimens, please make arrangements through the herbarium ([isaacb@CarnegieMNH.org](mailto:isaacb@CarnegieMNH.org)). There will be dinner and socializing at 6:00 at The Church Brew Works, 3525 Liberty Ave. Please RSVP Steve if you plan to have dinner at the brewpub.

Botanical Society of Western Pennsylvania  
Post Office Box 97994  
Pittsburgh, PA 15227



**Wildflowers  
of Pennsylvania**

Non-Profit Org  
US Postage  
PAID  
Pittsburgh, PA  
Permit No. 716

## *March 2008 Field Trips*

**Saturday, March 1** Lichens at North Country Trail, Butler County

Leader(s): Esther Allen and Barb Schomer  
Contact info: 412-366-0686

**Directions:** From Pittsburgh, take I-79 North to Exit 99 - US 422/Butler/New Castle. Drive east on US 422 roughly 5.8 miles to the Prospect Exit, and turn left (north) onto PA 528. Travel PA 528 for 2.5 miles to the highway bridge over Lake Arthur. Continue on PA 528 for 1.7 miles to a parking lot for the North Country Trail on the left-hand side of the road. If you reach Lindey Road on the left, you have gone too far.

**Saturday, March 22** Cedar Creek Park Westmoreland County

Leader: Mark Bowers; 724-872-5232  
4beagles@verizon.net

**Directions:** From Pittsburgh, follow Route 51 south. Ten miles from the bridge over the Mon in Elizabeth is a traffic light with an Exxon & Burger King on the left. At this traffic light,

**Wildflowers of Pennsylvania** (400 pp., 612 color photos) can be purchased for \$20 (plus \$1.40 sales tax for PA residents). Add \$2 postage and handling for one book, \$3/two, \$4/three, \$4.50/four. Forward your check, made payable to Botanical Society of Western PA, and your request to Dr. Mary Joy Haywood, RSM, PhD, 3333 Fifth Ave., Pittsburgh, PA 15213-3165; (412) 578-6175; haywoodmj@carlow.edu

make a left onto Concord Lane. (Concord Lane is first traffic light north of the I-70/PA 51 intersection on PA51).

On Concord Lane, follow the park signs to the main entrance. Follow the road downhill and turn left and pass a series of parking lots until you reach the farthest parking lot near Cedar Creek Gorge Trail, where we will meet.

**Saturday, March 29** Crouse Run, Allegheny County

Leader: Loree Speedy; 724-872-5232; mousemapper@verizon.net

**Directions:** From Pittsburgh, take PA 28 north to PA 8 North. Travel PA 8 for 6.6 miles to make a left onto Craighead Rd. (This left turn is about 0.7 miles after Harts Run Rd). Travel Craighead Rd. a short distance and make a left onto Mt Royal Blvd. After 0.4 miles, make a right onto Sample Rd. Travel downhill 0.7 mile to a highway bridge and park on left just before Royal View Rd. If you cross a second highway bridge you've gone too far.

**Note:** The Rachel Carson Trail has been rerouted to cross a stream twice. Wear waterproof boots. Or bring a change of shoes and a sense of adventure.